



Rialtas na hÉireann  
Government of Ireland



Arna chomhchistiú ag  
an Aontas Eorpach  
  
Co-Funded by the  
European Union



Show me the money – how the 1916 Bursary enables success by providing direct financial support to Irish students during each year of their tertiary education.

Student Affairs Ireland Conference: 18<sup>th</sup> June 2024  
Dr Declan Reilly: Irish Universities Association  
[www.1916Bursary.ie](http://www.1916Bursary.ie)

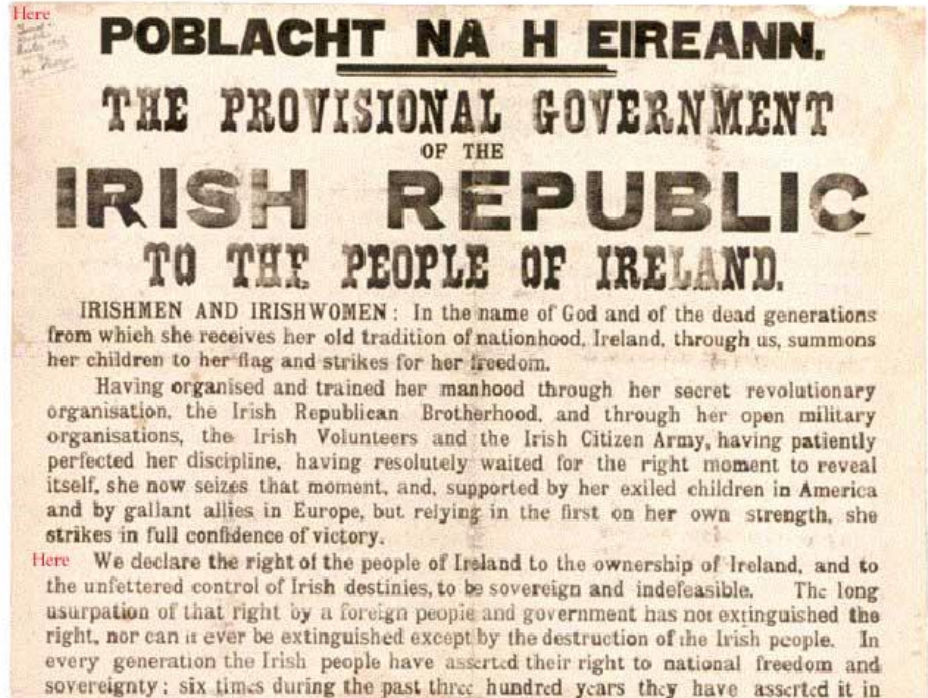
# What is the 1916 Bursary?

The 1916 Bursary is co-funded by the Government of Ireland and the European Union and aims to encourage participation and success by students who are most socio-economically disadvantaged and from groups most under-represented in higher education.

The Bursary is a financial award worth up to 5,000 euro per year for the duration of a student's course. The Bursaries are awarded to students from the priority groups in the National Access Plan 2022-2028.

Supports such as the 1916 Bursary are key to helping students from under-represented groups have the opportunity of third-level education and reach their full potential regardless of their background.

Launched in the 2017/2018 academic year and named to commemorate the Easter Rising of 1916 - the Bursary initially provided around 200 students a year with a bursary worth €5,000 during each year of their studies.



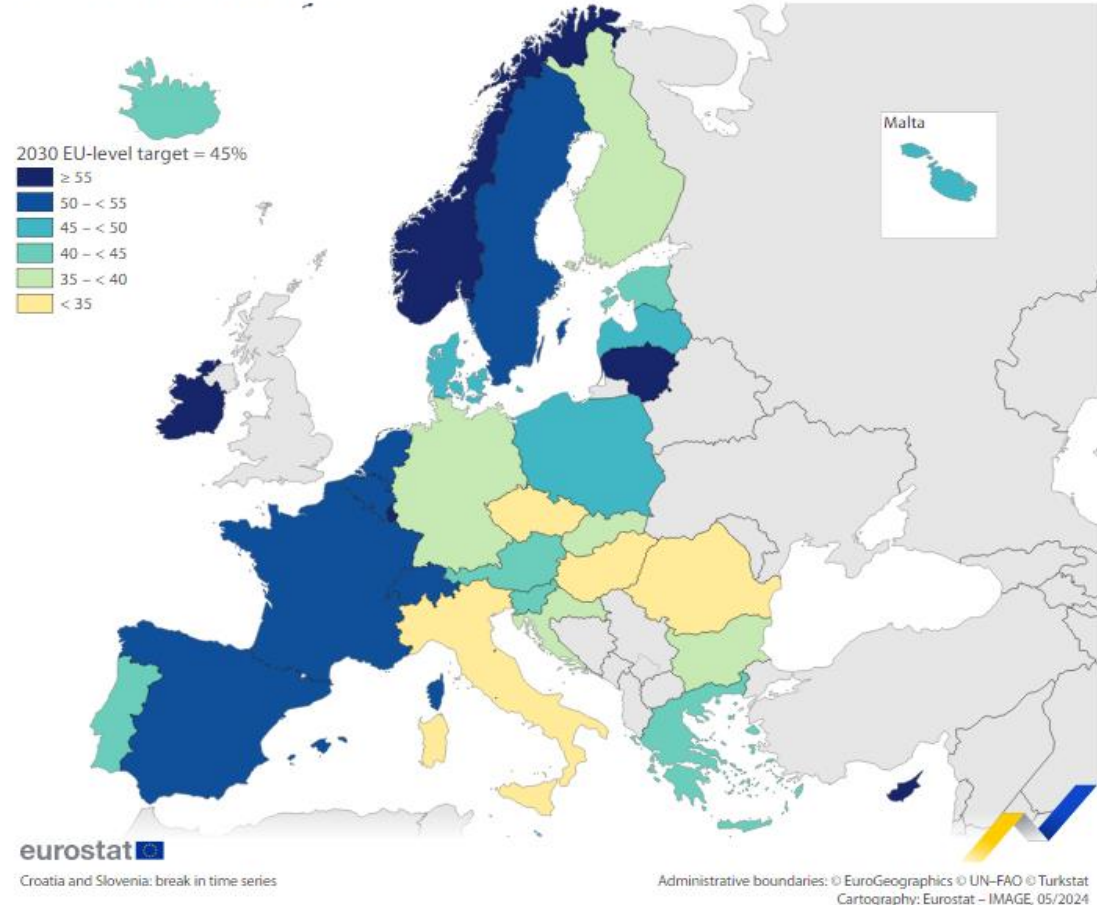
13 EU countries already reached the 2030 target:

Ireland (63%), Cyprus (62%), Luxembourg (60%), Lithuania (57%), the Netherlands (55%), Sweden (54%), Spain and France (both 52%), Belgium (50%), Denmark (49%), Malta and Poland (both 46%)

In contrast, the lowest shares were recorded in Romania (23%), Hungary (29%) and Italy (31%).

[43% of EU's 25-34-year-olds have tertiary education - Eurostat \(europa.eu\)](https://eurostat.ec.europa.eu/en/statistics-in-focus/43-of-eu-25-34-year-olds-have-tertiary-education)

## Tertiary education attainment, 2023 (% of population aged 25-34)







# NATIONAL ACCESS PLAN

A STRATEGIC ACTION PLAN  
FOR EQUITY OF ACCESS,  
PARTICIPATION AND  
SUCCESS IN HIGHER  
EDUCATION 2022-2028



This National Access Plan (NAP) identifies three main groups who are underrepresented in higher education: students who

- are socioeconomically disadvantaged;
- are members of Irish Traveller and Roma communities and
- have disabilities, including intellectual disabilities.

Supporting your third level journey



## Encouraging participation and success in higher education

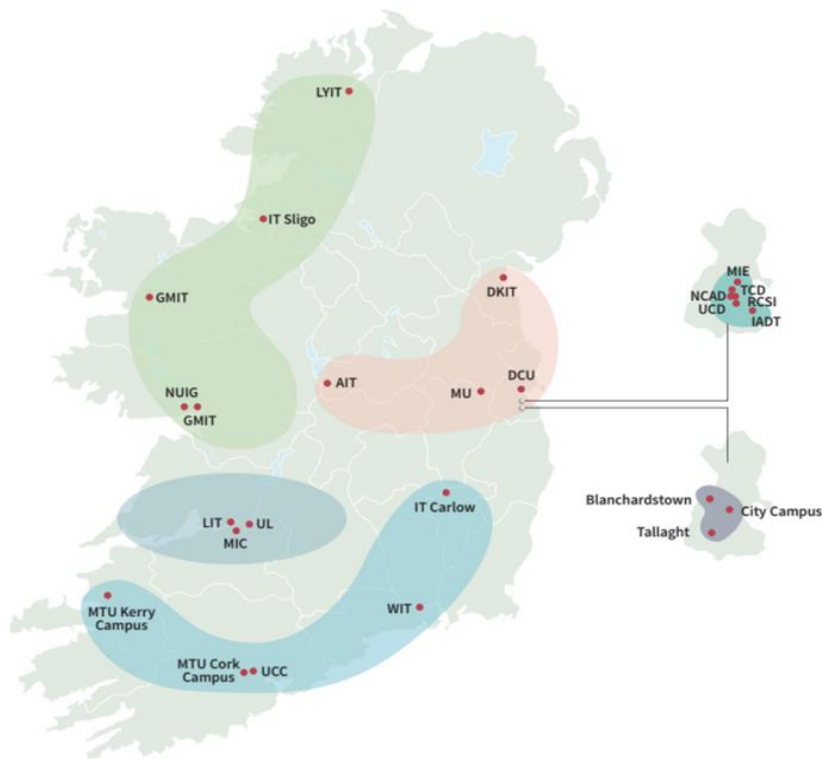
The 1916 Bursary aims to encourage participation and success by students who are most socio-economically disadvantaged and from groups most under-represented in higher education.

**The 1916 Bursary is now closed for applications for the 2023-24 year.**

Bursary level 2023-24	Number of students	Value per year	Totals - euro
Tier 1	400	5k per year	2 million
Tier 2	200	2k per year	0.4 million
Tier 3	840*	1.5k year 1	1.26 million*
Total:	1440		3.66 million

\* estimates as of June 2024





#### West North-West

Letterkenny Institute of Technology (LYIT)  
 Galway-Mayo Institute of Technology (GMIT)  
 Institute of Technology Sligo (IT Sligo)  
 National University of Ireland, Galway (NUIG)

#### Leinster Pillar 1

University College Dublin (UCD)  
 Institute of Art Design and Technology, Dún Laoghaire (IADT)  
 Marino Institute of Education (MIE)  
 National College of Art and Design (NCAD)  
 RCSI University of Medicine and Health Sciences (RCSI)  
 Trinity College Dublin (TCD)

#### MEND

Dublin City University (DCU)  
 Athlone Institute of Technology (AIT)  
 Dundalk Institute of Technology (DKIT)  
 Maynooth University (MU)

#### TU Dublin

TU Dublin – Blanchardstown Campus  
 TU Dublin – Tallaght Campus  
 TU Dublin – City Campus

#### Mid-West

University of Limerick (UL)  
 Mary Immaculate College (MIC)  
 Limerick Institute of Technology (LIT)

#### South

University College Cork (UCC)  
 MTU Cork Campus  
 MTU Kerry Campus  
 Institute of Technology Carlow (IT Carlow)  
 Waterford Institute of Technology (WIT)

# Who is the Bursary for?

- Socio-economically disadvantaged communities
- Socio-economic groups that have low participation rates in higher education
- Students with a disability
- Students who are carers
- Students who are QQI or Further Education award holders
- Lone and/or teen parents in receipt of a long-term means-tested social welfare payment
- Members of the Irish Traveller Community
- Members of the Roma Community
- First time, mature student entrants and 2nd chance mature students
- Persons from ethnic minorities who are lawfully present in the State

# What are the criteria?

## What are the College Entry criteria?

- Applicants for the 1916 Bursary must:
- Be a new entrant pursuing an undergraduate course and progressing to higher education for the first time
- Have been a resident in the Irish State for three of the past five years
- Be studying an approved full-time or part-time undergraduate course

## What are the Financial Criteria?

- Applicants must show that their household income meets the criteria for the SUSI Special Rate of Maintenance Grant; in 1 of 3 thresholds based on how many dependent children are in the household.
- Less than 4 = €25,000;
- 4 to 7 = €27,400;
- 8 or more = €29,702.
- The income threshold increases by €4,950 per additional person in college

# Evaluation and Impact



Our evaluation of the 1916 Bursary...between 2018 and 2021/22, indicates that the 1916 Bursary...is a significant resource that helps mediate some of the barriers associated with pursuing higher education and contributes to the success and retention in HE of students from groups traditionally underrepresented.

<https://collegeconnect.ie/without-the-help-i-would-have-dropped-out/>

## The Impact of 1916 Bursary on the Awardees

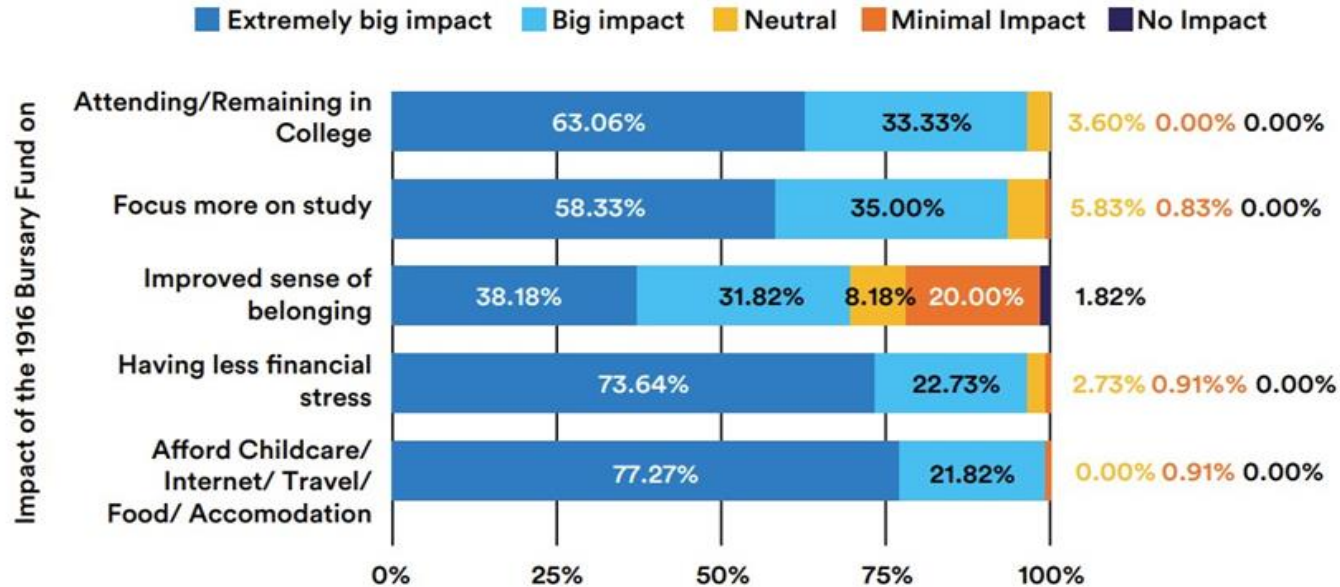


Figure 8- The Impact Scale of the Fund on Various Aspects of HE

<https://collegeconnect.ie/wp-content/uploads/2023/10/Without-The-Help-I-Would-Have-Dropped-Out.pdf>





## **Institute of Guidance Counsellors (IGC)**

The professional body for guidance counsellors in Ireland.

It is great to see how so many students have benefited from the 1916 Bursary! It is such a fantastic initiative which allows so many students to access third level education who would otherwise be unable to do so!

June 17<sup>th</sup> 2024



“Being a 1916 bursary recipient enabled me to strive towards completing my degree, contributing towards childcare costs and basic daily needs such as food expenses. In return, this helped me a lot to regain control over my anxiety and focus on my studies.”

Diana

Recipient of the 1916 Bursary, University College Cork

Supporting your third level journey



**“The 1916 Bursary gave me a safety net so I can focus on studying and not finances.”**

**Patryk, Tipperary.**

---

**Find out if you qualify  
visit: [www.1916bursary.ie](http://www.1916bursary.ie)**

The 1916 Bursary is co-funded  
by the Government of Ireland  
and the European Union.



Rialtas na hÉireann  
Government of Ireland



Arna chomhoibriú ag  
an Aontas Eorpach  
Co-funded by the  
European Union







Daiva studied Accounting at South East Technological University - 1916 Bursary Testimonial



Watch later



Share



1:03 / 1:03



YouTube







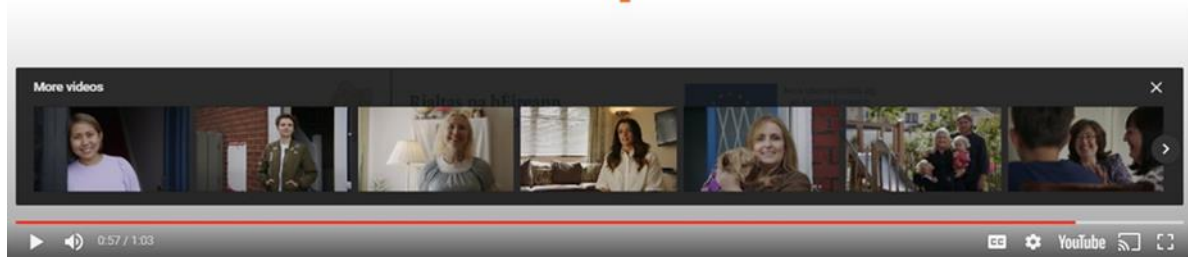
Rialtas na hÉireann  
Government of Ireland



Arna chomhchistiú ag  
an Aontas Eorpach

Co-Funded by the  
European Union

## The 1916 Bursary is co-funded by the Government of Ireland and the European Union



[www.1916bursary.ie](http://www.1916bursary.ie)